

Valve Regulated Lead Acid Battery

12V HYBRID GEL FRONT ACCESS BATTERY FAG Series

RANGE SUMMARY

By combining the newly developed Nano Gel electrolyte with up-to-date AGM structures, BSB FAG (Front Access Gel) range of batteries features 15 years design life and front access connections for fast, easy installation and maintenance.

This series is highly suited for telecom outdoor applications, renewable energy systems and other harsh environment applications.

FEATURES AND BENEFITS

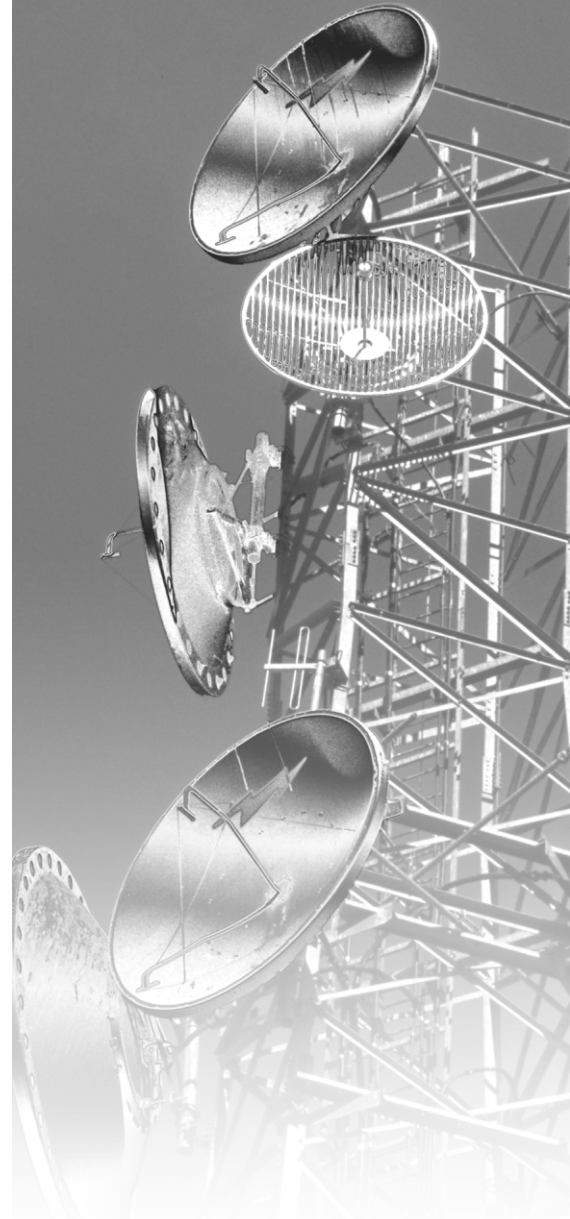
- 15 years design life in floating condition
- Wide operating temperature range from -15°C to 60°C
- Nano gel electrolyte eliminate the acid stratification and prolong cycle life
- Front access terminal with standard width for 19" and 23" ETSI racks
- 30% decreased float current lead to excellent high temperature resistance
- Thick flat plate with high Tin low Calcium alloy
- Low self-discharge rate and long shelf life (9 months at 20°C)
- Excellent deep discharge recovery capability

CONSTRUCTION

- Positive plate : Thick high Sn low Ca grid minimize corrosion and prolong life
- Negative plate : Balanced Pb-Ca grid for improved recombination efficiency
- Separator : Advanced AGM separator for ultra low float current
- Electrolyte : Dilute high purity sulphuric acid with nano gel
- Battery container and cover : ABS
- Pillar seal : 100% factory tested, proven two layers epoxy resin seal
- Relief valve : Complete with integrated flame arrestor

CHARGING VOLTAGE AND SETTINGS

- Constant voltage charging is recommended
- Recommended float charge voltage: 2.27Vpc @ 20°C
- Float voltage temperature compensation: -3mV/°C/cell
- Float voltage range: 2.25 to 2.29 Vpc @ 20°C
- Cyclic application charge voltage : 2.35 to 2.40Vpc @ 20°C
- Max. charge current allowable : 0.25C10A



Capacity Range: 50Ah-200Ah

General Specifications



Code No.	Voltage (V)	Capacity (AH)	Dimension								Weight		Terminal Type	
			Length		Width		Height		Total Height		Kg	Lb		
			mm	in	mm	in	mm	in	mm	in	mm	in		
FAG6-200	6	200	363	14.3	125	4.92	250	9.84	250	9.84	34.0	74.9	T21	
FAG12-50	12	50	390	15.4	105	4.13	200	7.87	200	7.87	21.3	47.0	T20	
FAG12-85	12	85	390	15.4	105	4.13	270	10.6	270	10.6	31.0	68.3	T20	
FAG12-100	12	100	395	15.6	110	4.33	285	11.2	285	11.2	33.0	72.7	T19	
FAG12-100A	12	100	395	15.6	110	4.33	285	11.2	285	11.2	31.5	69.5	T19	
FAG12-100B	12	100	506	19.9	110	4.33	224	8.82	239	9.40	32.0	70.6	T19	
FAG12-100C	12	100	390	15.4	105	4.13	287	11.3	287	11.3	34.0	74.9	T19	
FAG12-100D	12	100	390	15.4	105	4.13	287	11.3	287	11.3	34.0	74.9	T19	
FAG12-125	12	125	558	21.9	125	4.92	270	10.6	270	10.6	46.0	101	T19	
FAG12-150	12	150	550	21.7	110	4.33	285	11.2	285	11.2	44.5	98.1	T19	
FAG12-155	12	155	550	21.7	110	4.33	285	11.2	285	11.2	48.5	107	T19	
FAG12-160	12	160	546	21.5	125	4.92	315	12.4	315	12.4	51.5	114	T19	
FAG12-180	12	180	546	21.5	125	4.92	315	12.4	315	12.4	54.0	119	T19	
FAG12-200	12	200	522	20.6	238	9.37	218	8.58	221	8.70	64.0	141	T19	

Applications

- Outdoor Applications
- Telecommunications
- Renewable Energy system
- Power Utility

Complied Standards

- IEC 60896-21/22
- Eurobat guide, long life
- BS6290 part 4
- JISC 8704
- YD/T 799
- UL1989
- IATA and IMDG

Available Series

- OPzV Series
- OPzS Series
- FAG Series
- FA Series
- TGF Series
- TG Series
- Solar Series
- LSG Series
- LSE Series
- HR Series
- DC Series
- DB Series
- GB Series

Notes

For more information and for the complete list of models, please visit our website: www.bsbpower.com or send an email to enquiry@bsbpower.com
 Products specifications described herein are subject to change without prior notification.

Headquarters and subsidiaries

- BSB Power Company Limited (HQ)
- BSB Power Europe (France)
- BSB Power Malaysia Sdn. Bhd
- PT. BSB Indonesia
- BSB Power (Thailand) Co., Ltd
- BSB Power Company Pakistan Ltd



CT-JY-MKT-N-A05